

ESTABLISHING PARTNERSHIPS FOR SCHOOL HEALTH SERVICES

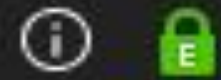


CALIFORNIA

**SCHOOL-BASED
HEALTH ALLIANCE**

Putting Health Care Where Kids Are

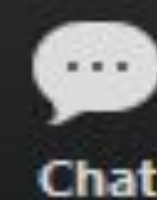
TYPE YOUR ANSWERS IN THE CHAT



What stage of SBHC implementation is your school/district?

Type your answers
in the chat

- 1. Exploration:** Assessing the feasibility and potential benefits
- 2. Installation:** Securing resources and setting up necessary infrastructure
- 3. Initial Implementation:** Starting to offer limited services
- 4. Full Implementation:** Fully operational and offering a full range of services
- 5. No implementation** efforts yet



Leave Meeting

PARTNERSHIPS ARE KEY

*"SBHC/WCs represent a **powerful union** between education and healthcare, working together to build a brighter future for California's students by promoting an **integrated, whole-child, and equity-enhancing approach.**" - CSHA*



<https://online.flippingbook.com/view/95921382/4/>

SBHCs ARE CRITICAL TO COMMUNITY SCHOOLS

- Create a site (“house”) in a Community School where resources are **co-located and integrated**
- Help **close the achievement gap** through better health and wellbeing
- Enhance **community engagement**
- Address **health and education disparities**
- Strengthen advocacy for policies that support the **whole child**



<https://online.flippingbook.com/view/95921382/4/>

LEARNING OBJECTIVES

By the end of today, you will be able to:

- ◆ Identify **key health partners** and understand their roles in supporting school-based health and wellness initiatives.
- ◆ Describe various **models of partnership** between schools and health organizations.
- ◆ Utilize **key elements of successful partnerships**, including mutual understanding, communication protocols, and strategies for shared goals and responsibilities.

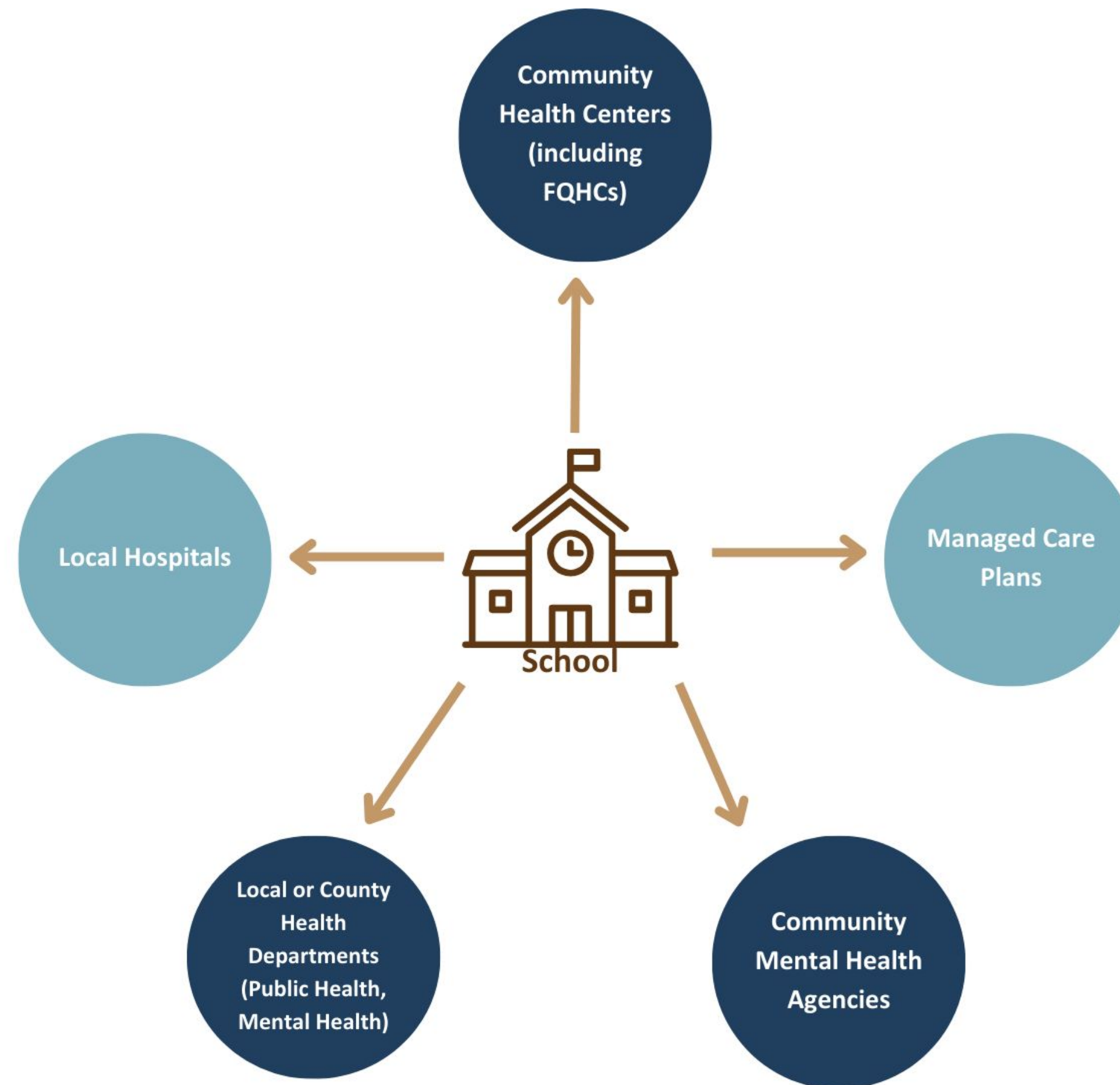


THE VALUE OF SCHOOL-COMMUNITY HEALTH PARTNERSHIPS

- ❖ Expertise
- ❖ Access
- ❖ Shared goals
- ❖ Blended funding
- ❖ Partners can bring additional resources
- ❖ **Schools can't do it alone!**

1.
**WHO ARE THE HEALTH
PARTNERS IN YOUR
COMMUNITY?**

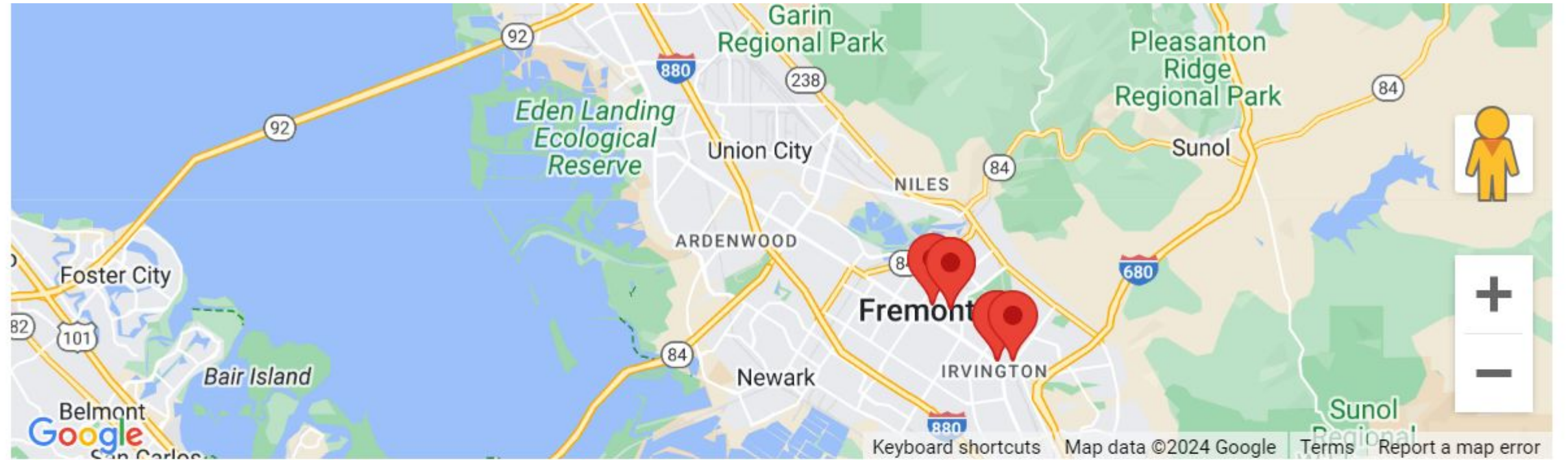
COMMON TYPES OF HEALTH PARTNERS



Org Type	Overarching Mission	Typical Services	Majority of Funding	Considerations for Schools
Community Health Centers (includes FQHCs)	Provide health svcs to low-income, underserved pops	<ul style="list-style-type: none"> -Primary care -Behavioral health -Dental 	Reimbursement from Medi-Cal and Medi-Cal managed care plans	Most SBHCs in CA are operated by CHCs so this is a highly aligned model
Local Health Departments	Preventing and responding to communicable disease outbreaks, public health emergencies	Varies widely	State allocations based on population size	Well aligned because of population health focus
County Mental Health Depts	Promoting mental health, preventing mental illness, providing access	Mental health services, particularly specialty mental health & co-occurring disorders	MHSA (Prop 63) and MediCal	May place county BH providers directly in schools, provide crisis response, PEI

Org Type	Overarching Mission	Typical Services	Majority of Funding	Considerations for Schools
Community Mental Health Agencies	Mental health services to the community (focus -moderate to severe mental health dx)	<ul style="list-style-type: none"> -Individual therapy -Psychiatry -Wraparound services -Crisis services 	Contracts with local Mental Health Plans for Medi-Cal services for children, youth and adults	Often already partnered with LEAs to deliver ERMHS services for students in Special Education, foster care and others
Managed Care Plans	Manage the quality, accessibility, and cost of healthcare for their members	<ul style="list-style-type: none"> -Access to network of providers -Care coordination 	Most health insurance in CA, including Medi-Cal, is provided through managed care organizations	ECM (Enhanced Care Management) is new opportunity, CYBHI Fee Schedule reimbursement
Local Hospitals	Non-profit hospitals have a responsibility to provide “community benefits” that address community needs	<ul style="list-style-type: none"> -Hospital based care -Outpatient specialty care -Some operate primary care clinics 	Commercial insurance and Medi-Cal reimbursement	<p>Prevention and early intervention may not be their focus</p> <p>Many are affiliated with teaching and training programs</p>

CPCA's Find My Health+ Center



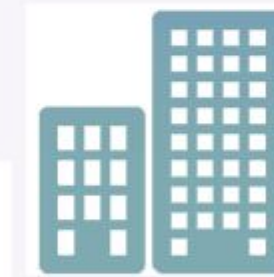
Bay Area Community Health - Irvington Dave Clinic

Phone: (510) 770-8040
Address: 40910 Fremont
Boulevard Fremont, CA 94538



Bay Area Community Health

Phone: (510) 252-5808
Address: 40910 Fremont
Boulevard Fremont, CA 94538



Bay Area Community Health - Liberty

Phone: (510) 770-8133
Address: 39500 Liberty Street
Fremont, CA 94538



<https://www.cPCA.org/>



CDPH's Local Health Department List



<https://www.cdph.ca.gov/Pages/LocalHealthServicesAndOffices.aspx>



I am looking for



I am a



Programs



A-Z Index



[Home](#) | [Administrative](#) | [Local Health Services/Offices](#) | [Local Health Services/Offices](#)

LOCAL HEALTH SERVICES/OFFICES

The CDPH informs, coordinates, and assists local health services and offices in the matters of public health. Because California has such a large and diverse population across a vast geographic area, we encourage you to contact your local health services department for more information on programs and information related to you and your region.

Listing by Local Areas

A-Z Index (by County or City)

[A](#) | [B](#) | [C](#) | [D](#) | [E](#) | [F](#) | [G](#) | [H](#) | [I](#) | [J](#) | [K](#) | [L](#) | [M](#) | [N](#) | [O](#) | [P](#) | [Q](#) | [R](#) | [S](#) | [T](#) | [U](#) | [V](#) | [W](#) | [X](#) | [Y](#) | [Z](#)



DHCS' County Mental Health Plan List



<https://www.dhcs.ca.gov/individuals/Pages/MHPContactList.aspx>



- Services
- Individuals
- Providers & Partners
- Laws & Regulations
- Data & Statistics
- Forms & Publications
- Search

County Mental Health Plan Information

Contact, Beneficiary Handbook, and Provider Directory

If you are experiencing a mental health crisis and need immediate assistance, please call 911 and explain the nature of your problem.

The Mental Health Plan (MHP) in each county is responsible for providing or arranging for the provision of Specialty Mental Health Services (SMHS) to Medi-Cal beneficiaries in their county. SMHS means the impact of the beneficiary's condition is severe enough for him/her to require the services of a specialist as opposed to a generalist in the field of mental health.

If you or someone you know is in need of mental health services, please contact your county MHP (see below list) for more information about SMHS.

Links to each MHP's beneficiary handbook and provider directory are also listed below.

[A](#) | [B](#) | [C](#) | [D](#) | [E](#) | [F](#) | [G](#) | [H](#) | [I](#) | [K](#) | [L](#) | [M](#) | [N](#) | [O](#) | [P](#) | [R](#) | [S](#) | [T](#) | [V](#) | [Y](#)

A table containing County Mental Health Plan's corresponding numbers.

County Mental Health Plan	Phone Number(s)
Alameda (and City of Berkeley)	(800) 491-9099

2.

WHAT ARE THE DIFFERENT MODELS OF PARTNERSHIP?



MODELS OF PARTNERSHIP

Continuum



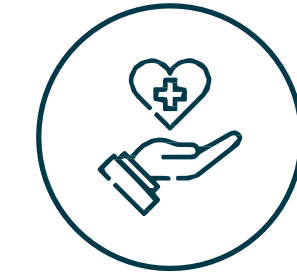
**LEA operates all
health services
in-house**

Own funding
Own personnel



Blended Models

Blended funding
District and partner personal



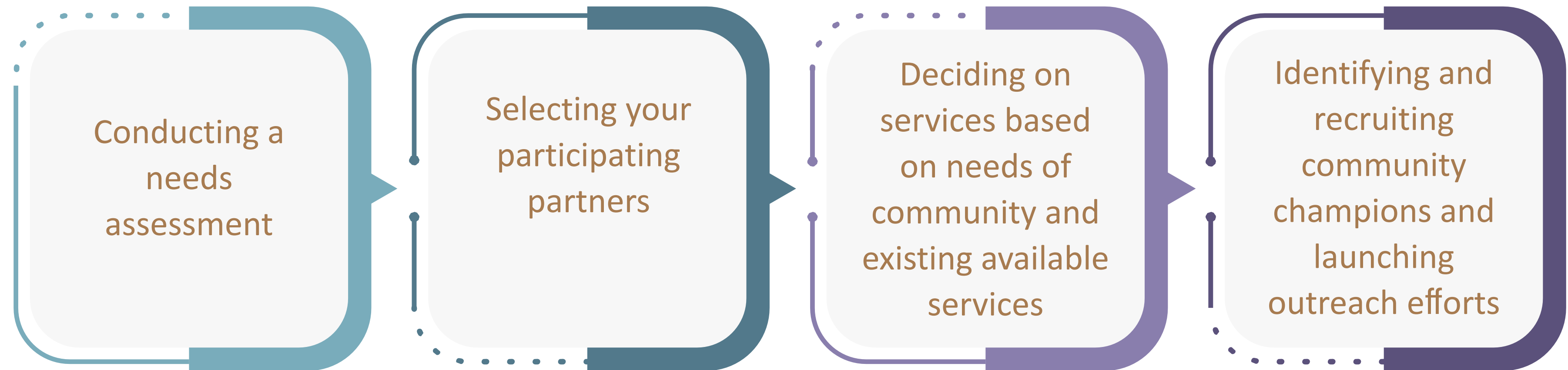
All Contracted

LEA contracts all
services to partner
organizations

BLENDING MODELS

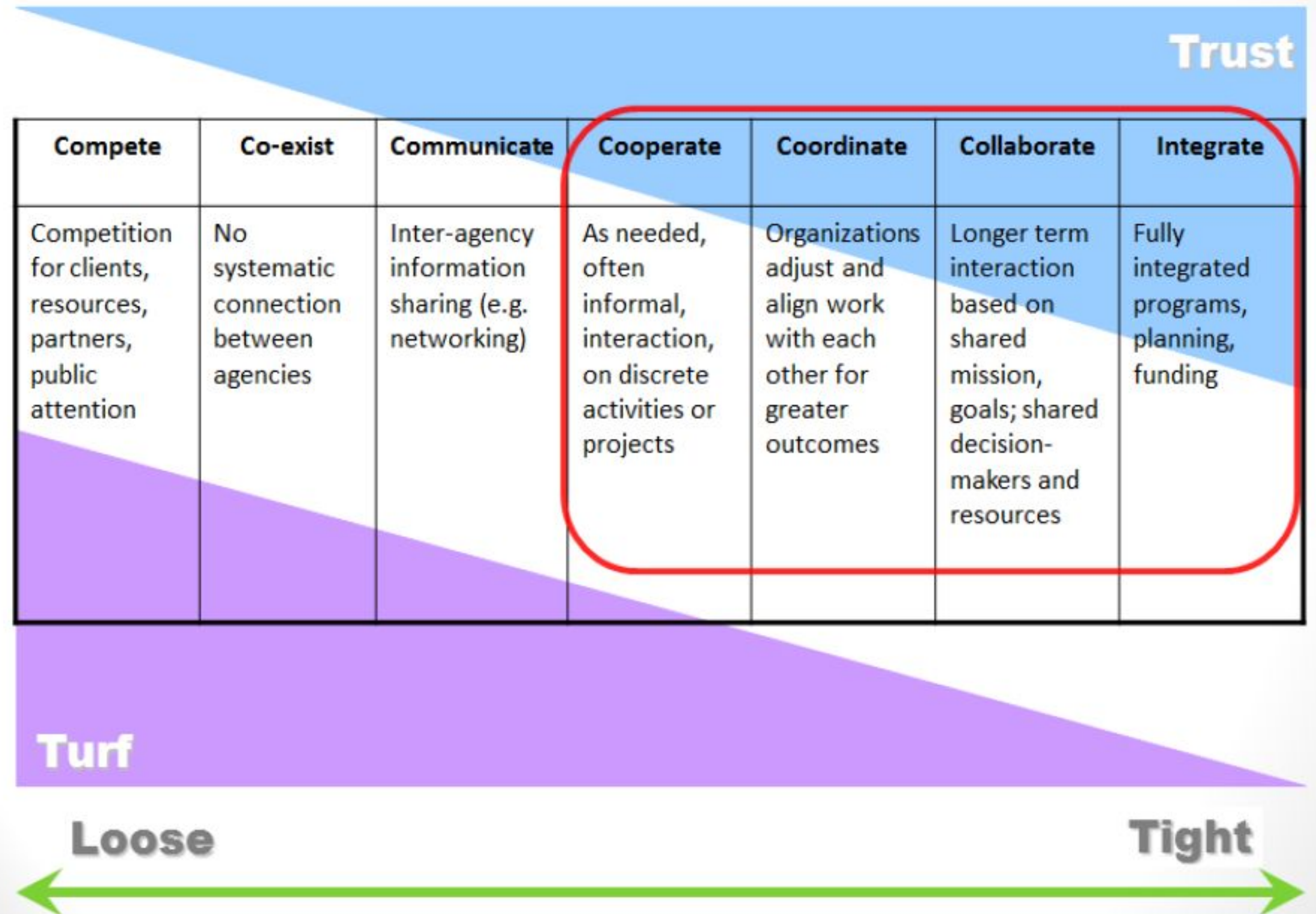
Health Services Commonly Provided by California Schools	Health Services Commonly Provided by Onsite Partners
<p>Nursing Speech therapy Academic counseling Hearing and vision screenings Focused therapy for specific populations</p>	<p>Dental screening Dental sealants Trauma screening and interventions Vaccines Sports Physicals Sexual and reproductive health services Health Education, individual and classroom Youth Leadership and Peer Health Education</p>

STAKEHOLDERS' INVOLVEMENT IN THE PLANNING STAGES



The Collaboration Spectrum

SPECTRUM OF COLLABORATION



3.

WHAT ARE THE KEY ELEMENTS OF SUCCESSFUL PARTNERSHIPS?

KEY ELEMENTS FOR SUCCESSFUL PARTNERSHIPS

- ❖ Mutual understanding on each partner's HIPAA FERPA obligations
- ❖ Mutual understanding of fiscal pressures of each partner/limitations of whom they can serve
- ❖ Communication and MOUs
- ❖ Crisis management
- ❖ Assessing the effectiveness of partners

BEGINNING YOUR SHARED WORK

Create a blueprint for collaboration

- ❖ A vision and mission for the partnership
- ❖ Partners' common interests and goals for services
- ❖ Clearly defined roles and responsibilities for all partners
- ❖ Decision-making and/or operational protocols for areas of intersection, such as:
 - Information sharing
 - Equipment and facilities sharing
 - Student access to the services
 - Community access to the services
- ❖ Systems for regularly scheduled and ad hoc communication

Letter of Agreement to which all partners can be held accountable.

BEGINNING YOUR SHARED WORK

Foster a Strong, Ongoing Relationship

- ❖ Identify liaisons representing the school, the partner, and any other key partners.
- ❖ Ensure partners are part of a Coordination of Services Team (COST)
- ❖ Ensure that the school and partner calendars are shared and kept updated.
- ❖ Schedule regular, standing meetings between school and partners as a forum for discussing accomplishments, as well as for noting challenges (before they become full-on problems!) and finding mutually acceptable solutions.
- ❖ Ensure that partner representatives attend school staff meetings and/or professional development sessions so they can give teachers and other personnel information about the services, and about relevant medical and mental health issues.



SCHOOL-HEALTH PARTNERSHIP CASE STUDY



510-268-1260



schoolhealthcenters.org

Community Health Center

St. John's Community Health

SJCH started its first walk-in clinic in 1964, since expanding to over 20 locations. It currently runs **eight school-based health centers in the Los Angeles and Compton Unified School Districts.**

Services Offered

- ◆ Comprehensive medical, dental, and mental health services
- ◆ Case management and care coordination
- ◆ COVID-19 testing and vaccination sites

Community Health Center

St. John's Community Health

Staffing Structure

- ◆ Varies based off of location and number of exam rooms
- ◆ For every 2 exam rooms:
 - ◆ 1 medical provider
 - ◆ 1 Medical Assistant
 - ◆ 1 front desk receptionist
- ◆ Centers with 6 or more exam rooms have a fourth Medical Assistant
- ◆ All centers have 1 benefits counselor regardless of size

Community Health Center

St. John's Community Health

Lessons Learned

- ◆ Integrating health center into services that already exist
- ◆ Relationship-building is the most important part
- ◆ Appoint a liaison to manage communication
- ◆ Measure and share progress

ASSESSING THE EFFECTIVENESS OF PARTNERSHIPS

- ❖ [School-Based Health Integration Quick Guide](#)
- ❖ [Integration Self-Assessment Rubric](#)
- ❖ [School Health Integration Worksheet](#)
- ❖ [School Health Integration Measurement Tool](#)

Short activity

Prompt

What characteristics of partnership models resonated with you? Please identify 2-3 potential organizational partners you may consider leveraging as you plan to build or expand your SBHC/wellness center.